



LoadSlammer Pro OracJr

LoadSlammer Pro OracJr with Max Current Range of 500A, 1500W made to be used with LoadSlammer Active Modules. Continuous power output.

SKU: 910-00011

- Key Features:**
- 5-1500A
 - Works with LoadSlammer Active Modules
 - Full AC and DC Load Testing
 - Allows for thermal emulation
 - Oven testing capable
 - Proprietary LoadSlammer Active Modules available for AMD, Xilinx, Ampere, Nvidia, Marvell, Broadcom

LoadSlammer Pro 1000 Remote Sense

LoadSlammer Pro 1000RS with Remote Sensor for Voltage monitoring at High Current. Suitable for high power CPU transient load testing. Kit includes power, data cables, and one pair of remote sense cables.

SKU: 910-00018

- Key Features:**
- 5 - 500A
 - 1000A/us slew rate
 - Parallels with LSP1000RS
 - GUI for life/ FW and GUI maintenance for 1 year
 - Same as the LSP1000 but with the following added features;
 - Off Board Remote Sense
 - Semi Rigid Remote Sense Cable

LoadSlammer Pro 1000

LoadSlammer Pro 1000 with Current Range of 5A to 500A. Suitable for high power CPU transient load testing. Kit includes power and data cables.

SKU: 910-00004

- Key Features:**
- 5 - 500A
 - 1000A/us slew rate
 - Parallels with LSP1000RS
 - GUI for life
 - FW and GUI maintenance for 1 year
 - Can be used in conjunction with PTO for higher current DC testing

LoadSlammer Pro Mini 200

LoadSlammer Pro Mini 200 with Current Range of 5A to 100A. Suitable for most medium power applications. Our most popular device in the mini-series. Kit includes power and data cables.

SKU: 910-00005

- Key Features:**
- 5 - 100A
 - Highest Resolution Current Measurement
 - GUI for life
 - FW and GUI maintenance for 1 year
 - Can be used in conjunction with PTO for higher current DC testing

LoadSlammer Pro Mini 40

LoadSlammer Pro Mini 40 with Current Range of 1A to 20A. Typical application standard power supply rail testing for ASIC, and FPGA IO and memory. Kit includes power and data cables.

SKU: 910-00006

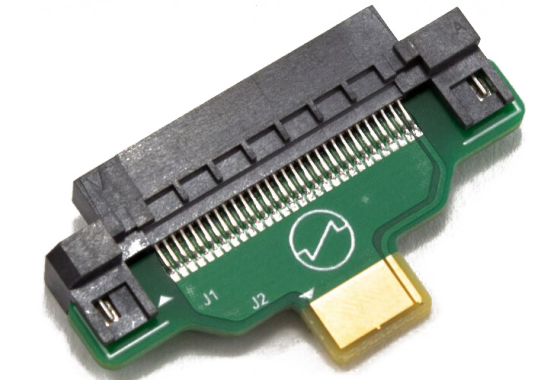
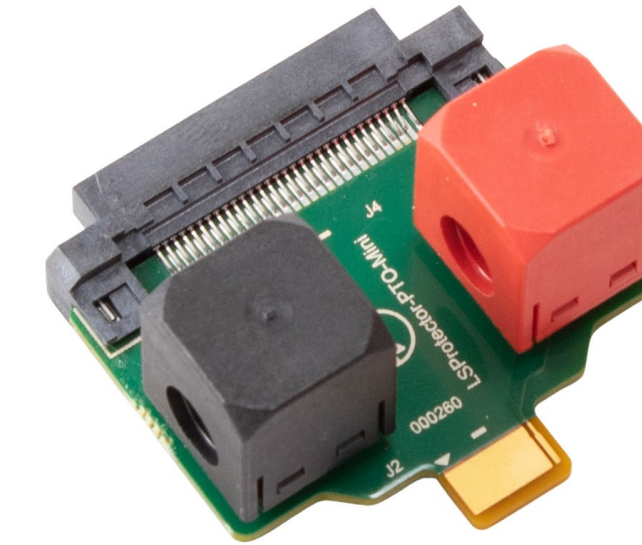
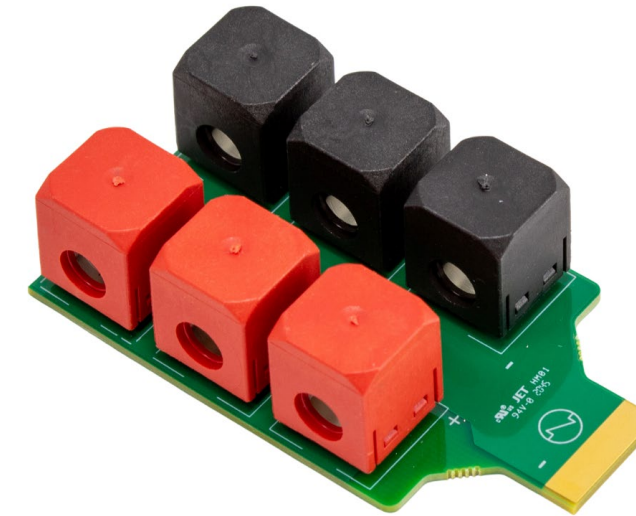
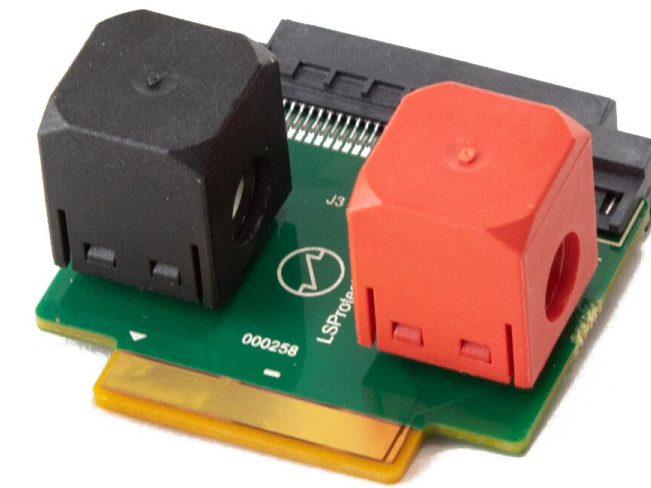
- Key Features:**
- 2 - 20A
 - High Resolution Current Measurement
 - GUI for life
 - FW and GUI maintenance for 1 year
 - Can be used in conjunction with PTO for higher current DC testing

LoadSlammer Pro Mini 08

LoadSlammer Pro Mini 08 with Current Range of 1A to 4A. Typical application small PoL, module and LDO solution testing. Kit includes power and data cables.

SKU: 910-00017

- Key Features:**
- 200mA - 4A
 - Highest Resolution Current Measurement
 - GUI for life
 - FW and GUI maintenance for 1 year
 - Can be used in conjunction with PTO for higher current DC testing



DC Cables

120A Very flexible high current cables for lab testing.

One side connects with Würth Red Cube Plug other comes tails or lug rings connectors for bench supplies.

SKU: Cables-Pair2ft

Key Features:

- Connect to PTO, mini-PTO and 360A PTO
- 120A High strand count all copper wire
- Use in conjunction with PTO

PTO

Power Take Off board for use with regular LoadSlammer Connector.

Allows for higher continuous power dissipation through a regular LoadSlammer connector.

SKU: LSA-PTO-004

Key Features:

- Allows for 120A continuous current to drawn from a single load point
- Works with LoadSlammer Passive Adaptors

Protector

Provides connection to the PCB DUT with a LoadSlammer using a standard LoadSlammer connector. Can also be connected across capacitors and areas of exposed copper.

SKU: MV LSA-Protector

Key Features:

- Works with PCB prototypes and production boards for connecting LoadSlammer where LoadSlammer sockets are not available
- Allows high current connections to be soldered to the DUT without directly soldering the LoadSlammer blade

PTO 360A

Connects 3 pairs of cables to a bench supply.

Solders directly to passive adaptor or DUT in addition to across capacitors and areas of exposed copper.

SKU: LSA-PTO-001

Key Features:

- 360A
- Parallelable
- Can be used in conjunction with Passive Adaptors, System DUTs and DC cables

Mini PTO

Power Take Off board for use with small LoadSlammer Connector.

Allows for higher continuous power dissipation through a small LoadSlammer connector.

SKU: MV LSA-PTO-002

Key Features:

- Allows for 120A continuous current to drawn from a single load point
- Works with LoadSlammer Passive Adaptors

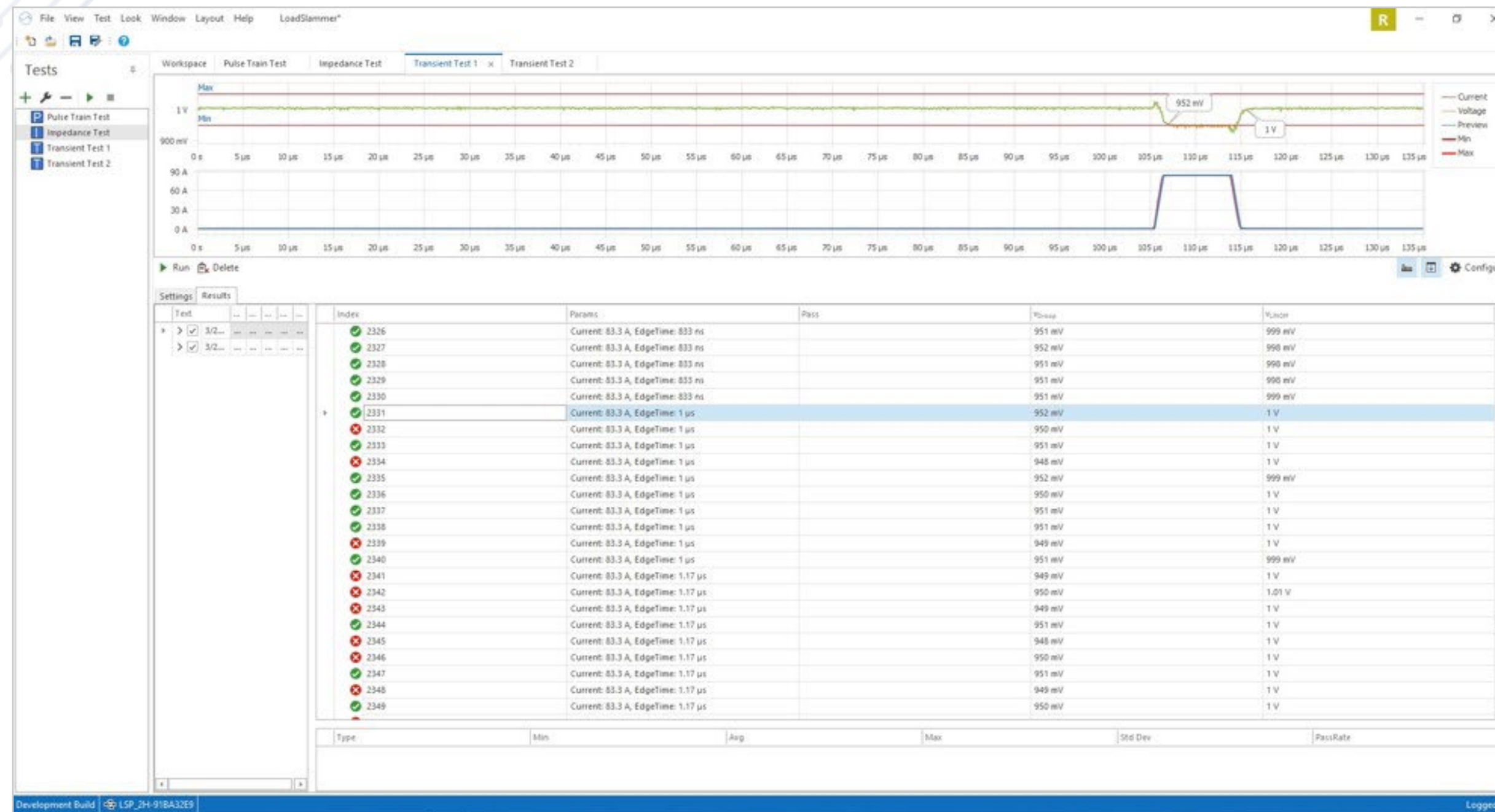
Mini Protector

Provides connection to the PCB DUT with a LoadSlammer using a small LoadSlammer connector across capacitors and areas of exposed copper.

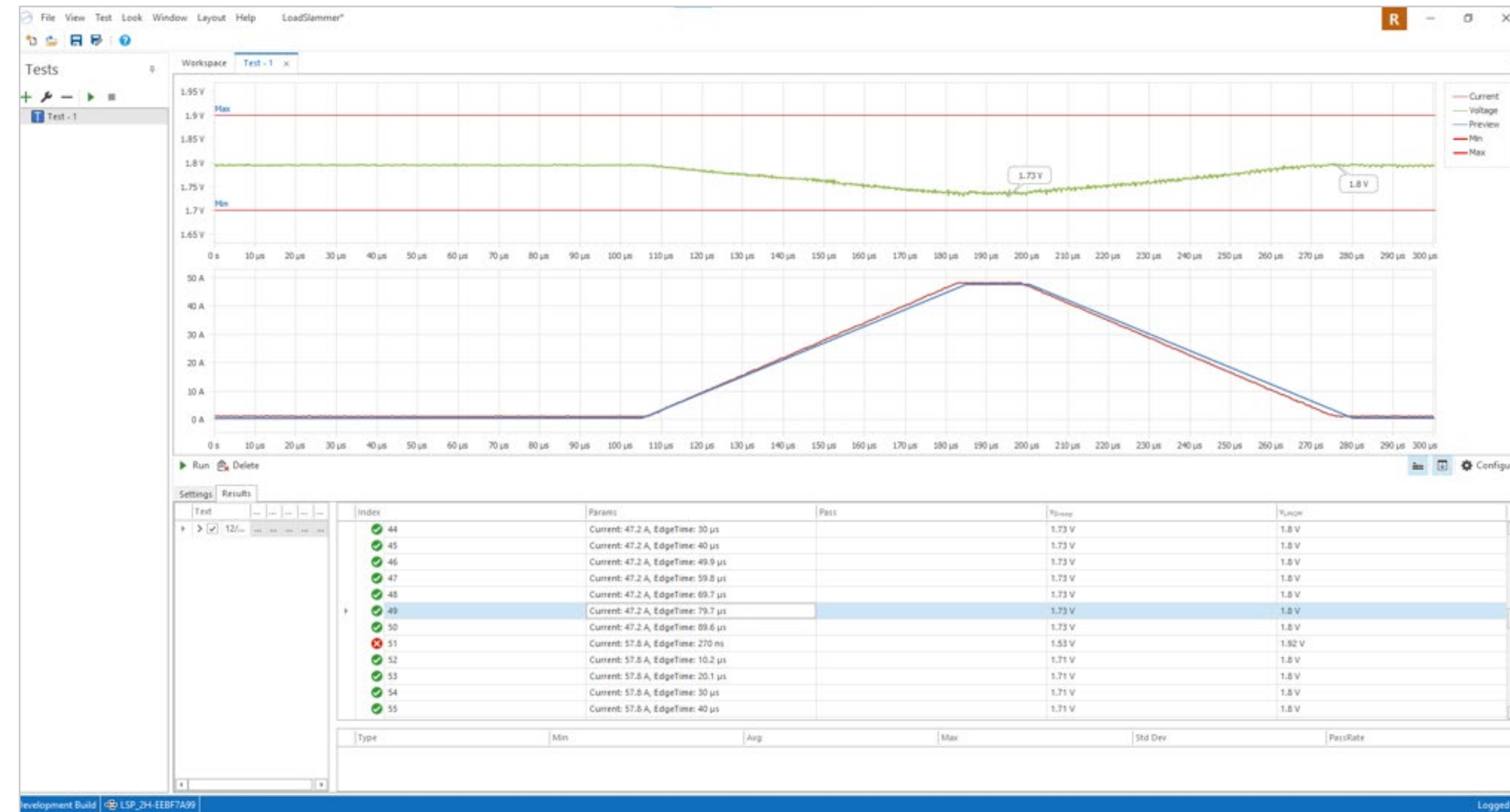
SKU: LSA-Protector-Mini

Key Features:

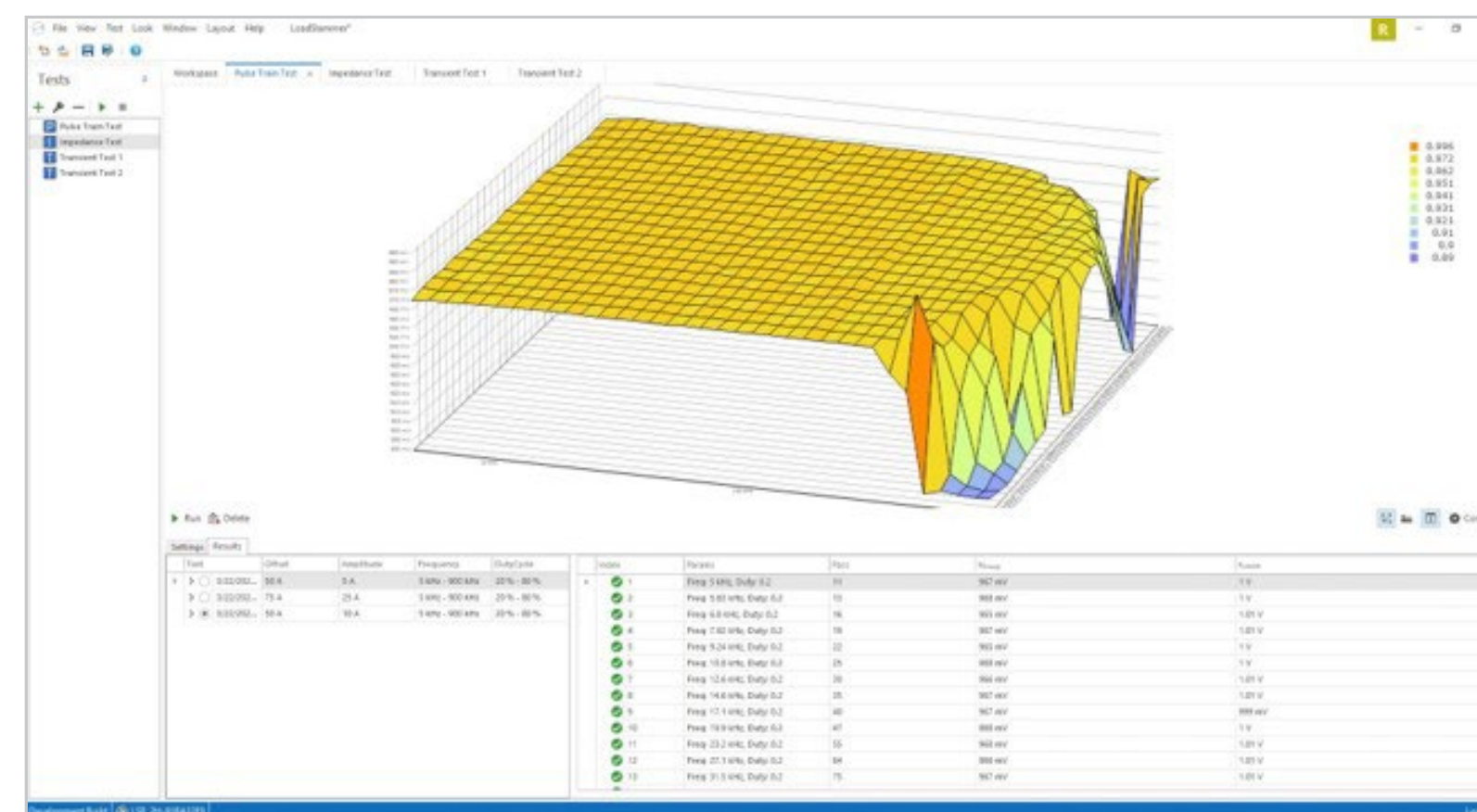
- Works with PCB prototypes and production boards for connecting LoadSlammer where LoadSlammer sockets are not available
- Allows high current connections to be soldered to the DUT without directly soldering the LoadSlammer blade



Here is an example of passing and failing a transient test with the LoadSlammer GUI.



Here is an example of a Pulse Train at 50A domain.



An example of a 3D sweep, Pulse Train at 50A and 10A offset in time. [\(Link\)](#)

	OracJr	LSP1000RS	LSP1000	ProMini 200	ProMini40	ProMini 08
Amperage	500A	5 - 500A	5 - 500A	5 - 100A	2 - 20A	200mA - 4A
GUI For Life, Firmware and Maintenance for 1 year.	Yes	Yes	Yes	Yes	Yes	Yes
Can be continuously tested?	Yes	Yes, paired with a PTO and external power source.	Yes, paired with a PTO and external power source.	Yes, paired with a PTO and external power source.	Yes, paired with a PTO and external power source.	Yes, paired with a PTO and external power source.
Semi Rigid Remote Sense Cable	No	Yes	No	No	No	No
Can be used in parallel with LSP1000RS	No	Yes	Yes	No	No	No
Current Resolution Measurement	1A	1A	1A	1A	250mA	50mA
Capable of Oven Testing	Yes	Yes	Yes	Yes	Yes	Yes
Thermal Emulation	Yes	No	No	No	No	No