

LoadSlammer^{II} Windows XP / 7 Fix

Introduction

For versions of Windows before Windows 8, the automatic driver assignment built into the LoadSlammer™ does not work. This document aims to provide an easy route to get older versions of Windows working with the Loadslammer™.

Required Tools

- Zadig by Pete Batard (<https://zadig.akeo.ie/>)
 - Direct Link to Software:
<https://github.com/pbatard/libwdi/releases/download/b721/zadig-2.4.exe>
- PC running Windows XP or newer
- MiniUSB cable
- LoadSlammer™ Device

Procedure

1. Plug the LoadSlammer™ USB cable into the PC that will be used for testing.
2. On the same PC, launch the zadig executable.
3. At the top of the application window, select: *Options > List All Devices*

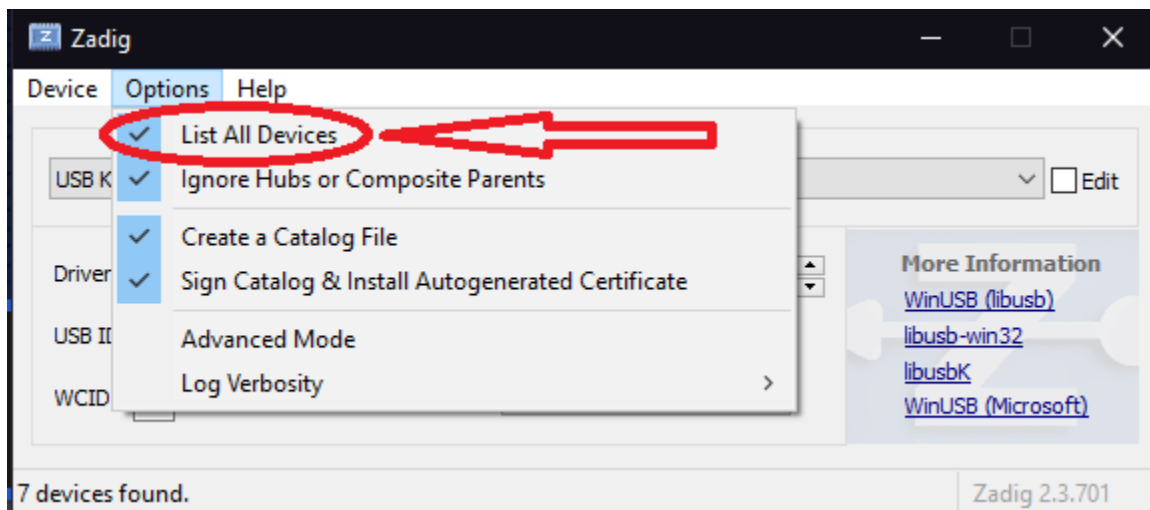


Figure 1: Location of "List All Devices" Option

4. Select the LoadSlammer™ device in the drop down menu.

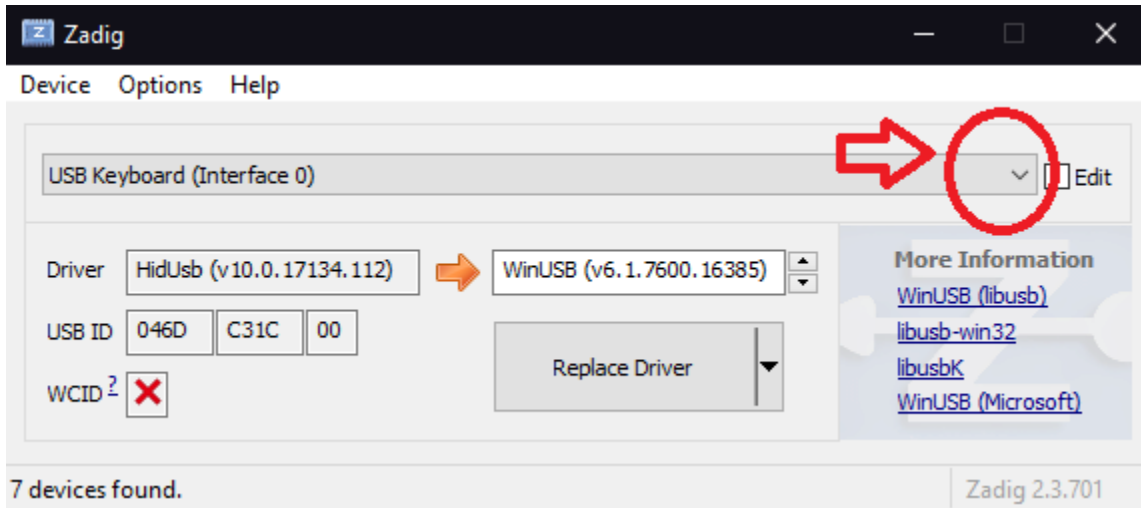


Figure 2: Drop Down Menu Location

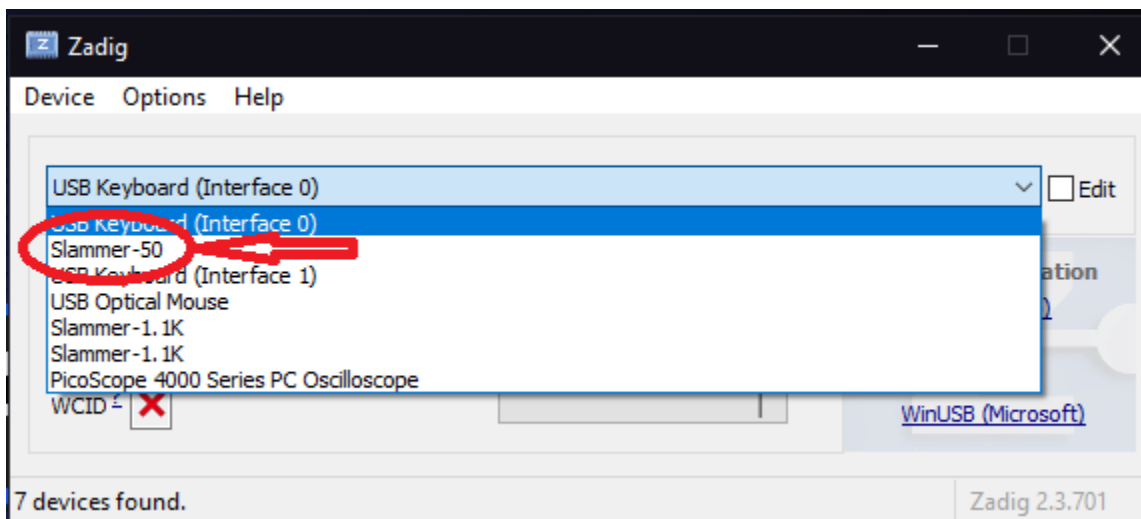


Figure 3: Example of Slammer in Drop Down Menu

- Using the up and down arrows just above the “Replace Driver” button, cycle through the options until the field reads “WinUSB”.

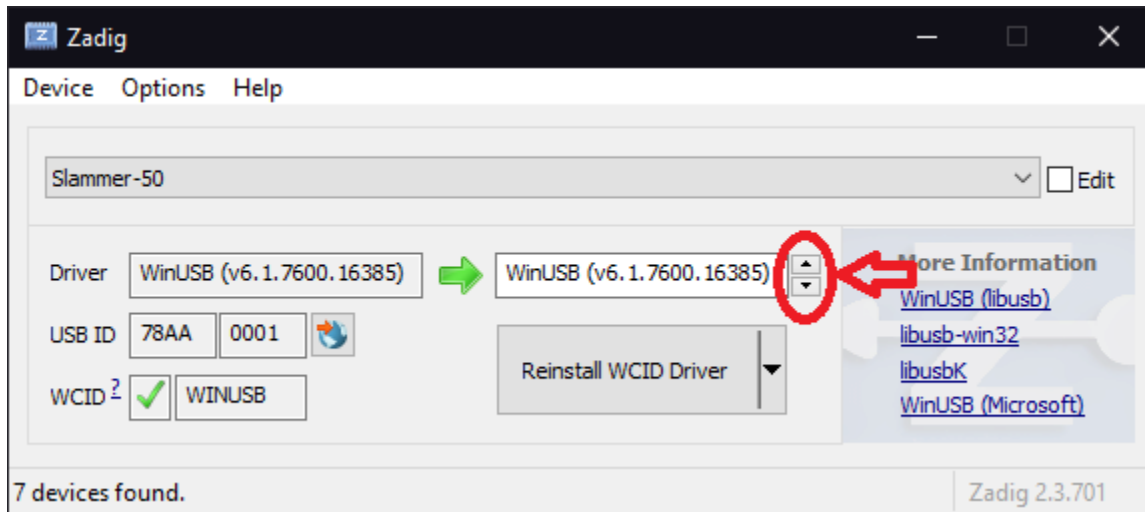


Figure 4: Location of Up and Down Arrows to Cycle Available Drivers

- Click the Replace Driver Button.

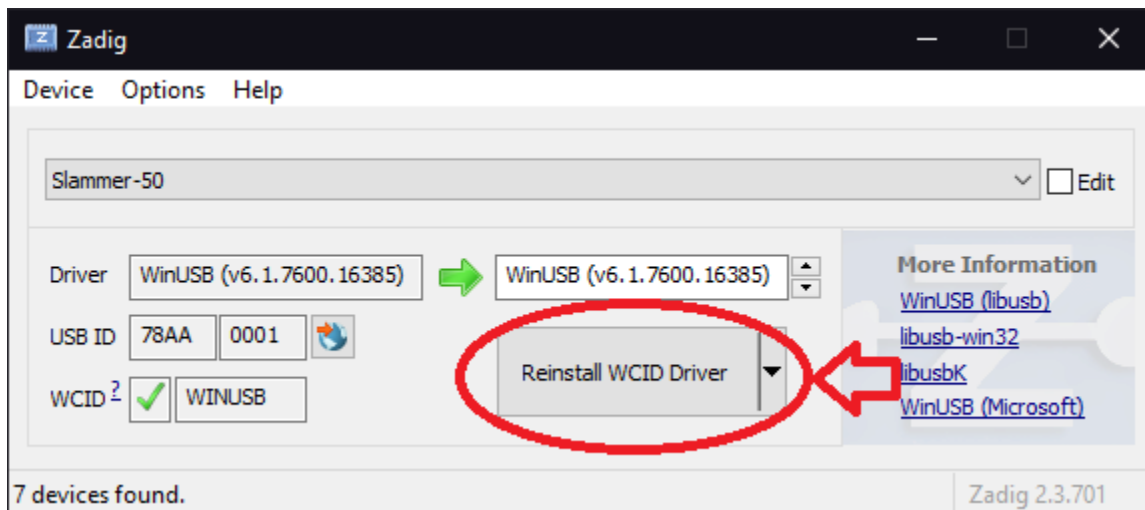


Figure 5: Location of “Replace Driver” button. Text may vary depending on OS / Preinstalled Driver

7. After a short installation sequence, a confirmation prompt will alert “The driver was installed successfully.” Close this window.

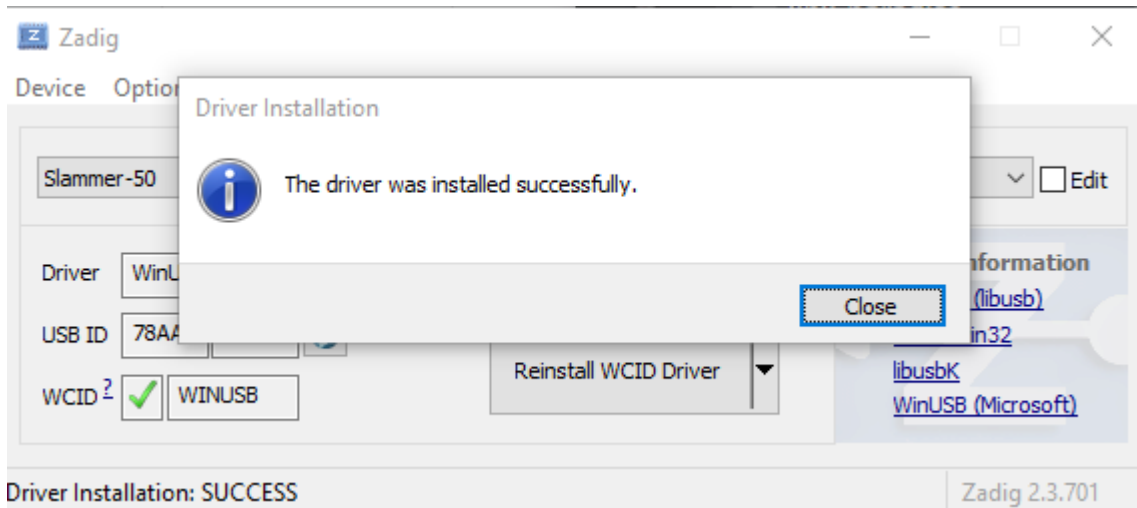


Figure 6: Installation Confirmation Window

8. Disconnect and reconnect the LoadSlammer™, it will now properly communicate with the LoadSlammer™ GUI.

Troubleshooting

- **The Slammer does not appear in the device drop down list**
 - Disconnect and reconnect the Slammer.
 - Ensure the MiniUSB cable is properly seated in the PC and the LoadSlammer™.
 - Try plugging the Slammer into a different USB port.
 - Restart the PC, occasionally USB drivers need a device restart to refresh.
- **Zadig does not open correctly**
 - Try running Zadig as an admin.
 - Ensure that your PC is running at least Windows XP.
- **Zadig gets stuck on the Driver Installation Screen**
 - Allow the installation process to time out, restart Zadig, and try again from step 1.
- **The LoadSlammer™ is still unrecognized after updating the drivers**
 - Unplug and reconnect the LoadSlammer™. Occasionally USB drivers fail to initialize on connection, and it may take a couple attempts.
 - Ensure that the WINUSB driver was selected in Step 5.
 - Reinstall the WINUSB drivers.

Revision History

- V 1.0
 - Initial Release